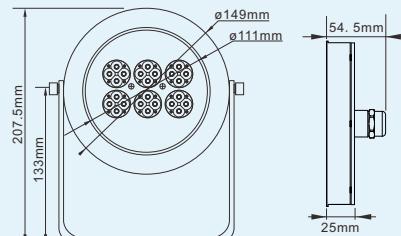


Version A



Product Size



Specification

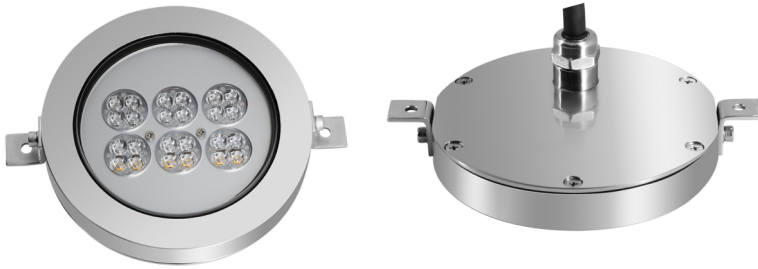
<b>Model No.:</b>	RS-UW24W316X-AS(88456)
<b>Front cover &amp; Housing:</b>	Stainless steel 316L
<b>Dimensions:</b>	L149*H207.5mm(Max.)
<b>Tempered Glass:</b>	8mm thickness
<b>LED chip:</b>	Cree
<b>LED Q'ty:</b>	18pcs 3W LED / 24pcs 3W LED
<b>Cable gland:</b>	Stainless steel 316L PG13.5
<b>Driver:</b>	Constant current driver
<b>Lens:</b>	Clear, Bead
<b>Beam Angle Options:</b>	10° 30° 60°
<b>Power Cable:</b>	AWG 3/18 or AWG 5/18 SOW rubber cable
<b>Protection Class:</b>	IP68
<b>Environment:</b>	Dry / Submerged
<b>Mounting Hardware:</b>	Surface Mounted System
<b>Net Weight:</b>	2.10kgs with 1.5m cable
<b>Lifetime:</b>	>50000H

Order information

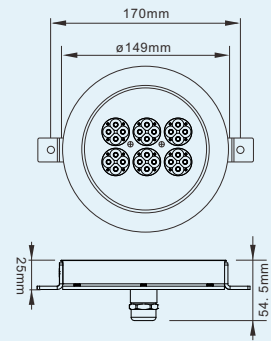
Item code	Color	Light source(w)	Line Way	Input Voltage (v)	Operating current (mA)	Consumption (w)	Luminous (lm)
88456.183.01	2700-3000K	18*3	V+/V-	DC24	2250	54	2520
88456.183.02	4000-4500K	18*3	V+/V-	DC24	2250	54	2664
88456.183.03	5000-5500K	18*3	V+/V-	DC24	2250	54	2790
88456.183.04	6000-6500K	18*3	V+/V-	DC24	2250	54	2790
88456.183.05	Red	18*3	V+/V-	DC24	1500	36	630
88456.183.06	Green	18*3	V+/V-	DC24	2250	54	1620
88456.183.07	Blue	18*3	V+/V-	DC24	2250	54	720
88456.183.08	Yellow	18*3	V+/V-	DC24	2250	54	1710
88456.183.09	RGB-DMX512 (3 channel)	18*3	V+ /V- /D+ /D- /GND	DC24	R: 500 B: 750 G: 750	R: 12 B: 18 G: 18	R: 210 B: 180 G: 480
88456.243.12	RGBW-DMX512 (4 channel)	24*3	V+ /V- /D+ /D- /GND	DC24	R: 500 B: 750 G: 750 W: 750	R: 12 B: 18 G: 18 W: 18	R: 210 B: 180 G: 480 W: 480



Version B



Product Size



Specification

<b>Model No.:</b>	RS-UW24W316X-BW(88456)
<b>Front cover &amp; Housing:</b>	Stainless steel 316L
<b>Dimensions:</b>	L170*H25mm
<b>Tempered Glass:</b>	8mm thickness
<b>LED chip:</b>	Cree
<b>LED Q'ty:</b>	18pcs 1W LED / 24pcs 1W LED
<b>Cable gland:</b>	Stainless steel 316L PG13.5
<b>Driver:</b>	Constant current driver
<b>Lens:</b>	Clear, Bead
<b>Beam Angle Options:</b>	10° 30° 60°
<b>Power Cable:</b>	AWG 3/18 or AWG 5/18 SOW rubber cable
<b>Protection Class:</b>	IP68
<b>Environment:</b>	Dry / Submerged
<b>Mounting Hardware:</b>	Surface Mounted System
<b>Net Weight:</b>	1.9kgs with 1.5m cable
<b>Lifetime:</b>	>50000H

Order information

Item code	Color	Light source(w)	Line Way	Input Voltage (v)	Operating current (mA)	Consumption (w)	Luminous (lm)
88456.181.01	2700-3000K	18*1	V+/V-	DC12-24	1500 / 750	18	1620
88456.181.02	4000-4500K	18*1	V+/V-	DC12-24	1500 / 750	18	1710
88456.181.03	5000-5500K	18*1	V+/V-	DC12-24	1500 / 750	18	1800
88456.181.04	6000-6500K	18*1	V+/V-	DC12-24	1500 / 750	18	1800
88456.181.05	Red	18*1	V+/V-	DC12-24	1500 / 750	18	450
88456.181.06	Green	18*1	V+/V-	DC12-24	1500 / 750	18	1080
88456.181.07	Blue	18*1	V+/V-	DC12-24	1500 / 750	18	540
88456.181.08	Yellow	18*1	V+/V-	DC12-24	1500 / 750	18	1260
88456.181.09	RGB-DMX512 (3 channel)	18*1	V+ /V-/D+/D-/GND	DC12-24	R: 500 / 250 B: 500 / 250 G: 500 / 250	R: 6 B: 6 G: 6	R: 150 B: 180 G: 360
88456.241.12	RGBW-DMX512 (4 channel)	24*1	V+ /V-/D+/D-/GND	DC12-24	R: 500 / 250 B: 500 / 250 G: 500 / 250 W: 500 / 250	R: 6 B: 6 G: 6 W: 6	R: 150 B: 180 G: 360 W: 420

