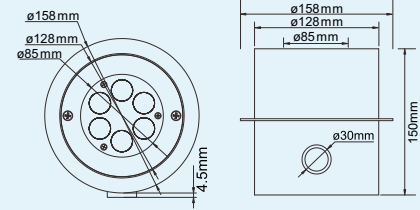


### Product Size



### Specification

<b>Model No.:</b>	RS-RP18W316X(88251) / RS-RP24W316X(88251)
<b>Front cover &amp; Housing:</b>	316L Stainless steel lamp body+Stainless steel 304 Niche
<b>Dimensions:</b>	D128*H150mm
<b>Tempered Glass:</b>	8mm thickness
<b>LED chip:</b>	CREE / EDISON
<b>LED Q'ty:</b>	6pcs 3W LED / 6pcs 3in1 LED / 6pcs 4in1 LED
<b>Cable gland:</b>	Stainless steel 316L PG13.5
<b>Driver:</b>	Constant current driver
<b>Lens:</b>	Clear, Bead, Frosted
<b>Beam Angle Options:</b>	10° 30° 45° 60° 90°
<b>Power Cable:</b>	AWG 5/18 or AWG 3/18 SOW rubber cable
<b>Protection Class:</b>	IP68
<b>Environment:</b>	Dry / Pool
<b>Mounting Hardware:</b>	Embedded System
<b>Net Weight:</b>	3.5kgs with 1.5m cable
<b>Lifetime:</b>	>50000H

### Order information

Item code	Color	Light source(w)	Line Way	Input Voltage (v)	Operating current (mA)	Consumption (w)	Luminous (lm)
88251.063.01	2700-3000K	6*3	V+/V-	AC/DC12-24	750	18	840
88251.063.02	4000-4500K	6*3	V+/V-	AC/DC12-24	750	18	880
88251.063.03	5000-5500K	6*3	V+/V-	AC/DC12-24	750	18	930
88251.063.04	6000-6500K	6*3	V+/V-	AC/DC12-24	750	18	930
88251.063.05	Red	6*3	V+/V-	AC/DC12-24	500	12	210
88251.063.06	Green	6*3	V+/V-	AC/DC12-24	750	18	540
88251.063.07	Blue	6*3	V+/V-	AC/DC12-24	750	18	240
88251.063.08	Yellow	6*3	V+/V-	AC/DC12-24	750	18	570
88251.063.09	RGB-DMX512 (3 channel)	6*3	V+/V- /D+/D-/GND	AC/DC12-24	R: 333 / 166 B: 500 / 250	G: 500 / 250	R: 70 B: 80
88251.063.10	RGB-DMX512 (3 channel)	6*3in1	V+/V- /D+/D-/GND	AC/DC12-24	R: 333 / 166 B: 500 / 250	G: 500 / 250	R: 150 B: 180
88251.063.11	Auto changing color	6*3	V+/V-	AC12-24	R: 333 / 166 B: 500 / 250	G: 500 / 250	R: 70 B: 80
88251.063.13	RGBV+ (build-in CC driver)	6*3	R/G/B/V+	DC12-24	R: 333 / 166 B: 500 / 250	G: 500 / 250	R: 70 B: 80
88251.064.14	RGBW-DMX512 (4 channel)	6*4in1	V+/V- /D+/D-/GND	DC24	R: 250 B: 250	G: 250 W: 250	R: 150 B: 180

